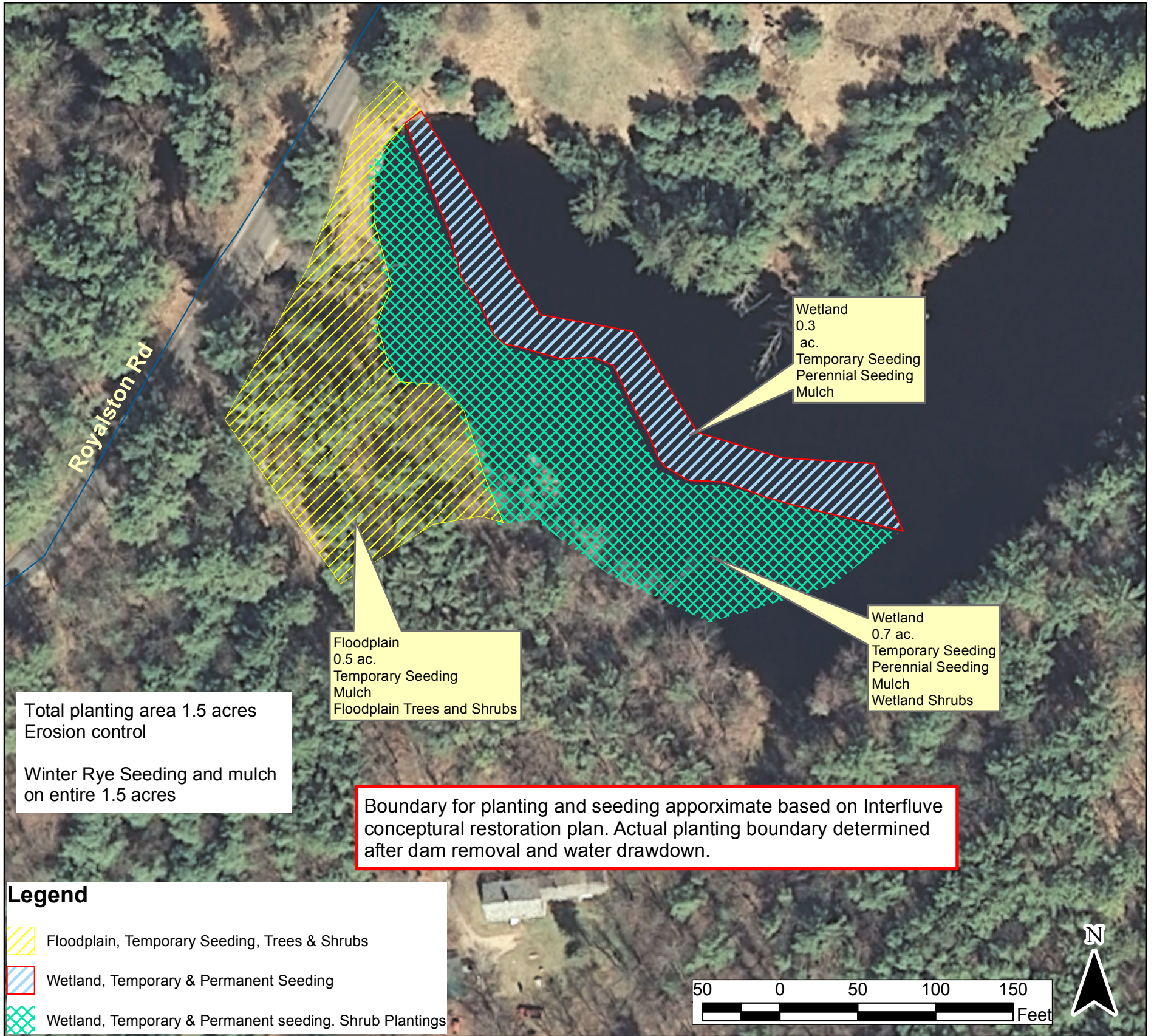


# Boyce Pond Dam Restoration Planting & Seeding Plan

Date: 9/22/2014  
Customer(s): GEORGE WONS  
District: Cheshire County Conservation District

Field Office: Walpole  
Agency: USDA-NRCS  
Assisted By: WENDY WARD



Total planting area 1.5 acres  
Erosion control  
Winter Rye Seeding and mulch on entire 1.5 acres

Boundary for planting and seeding approximate based on Interfluve conceptual restoration plan. Actual planting boundary determined after dam removal and water drawdown.

### Legend

- Floodplain, Temporary Seeding, Trees & Shrubs
- Wetland, Temporary & Permanent Seeding
- Wetland, Temporary & Permanent seeding. Shrub Plantings

Wildlife Shrubs - Wetland			
Landowner: Boyce Pond			Total Sq. Ft.
			<b>30,492</b>
<b>acres</b>			<b>0.7</b>
<b>10.5' x 10.5' Spacing Per Acre -</b>			670 <b>475</b>
Common name	Scientific name	Form	Number of Plants needed
Chokeberry, Black	<i>Aronia melanocarpa</i>	1 G	10
Winterberry	<i>Ilex verticillata</i>	1 G	10
Blueberry, Highbush	<i>Vaccinium corymbosum</i>	1 G	10
Wild Raisin / Witherod	<i>Viburnum cassinoides</i>	1 G	10
Hornbeam, American (Musclewood)	<i>Carpinus caroliniana</i>	1G	10
Alder, Speckled	<i>Alnus incana/rugosa</i>	1 G	15
Shadbush (small tree)	<i>Amelanchier sp.</i>	1 G	10
<b>Total Container Plants</b>			<b>75</b>
Buttonbush	<i>Cephalanthus occidentalis</i>	3' Stake	50
Dogwood, Silky	<i>Cornus amomum</i>	3' Stake	60
Dogwood, Red Osier	<i>Cornus stolonifera</i>	3' Stake	50
Willow, Pussy	<i>Salix discolor</i>	3' Stake	70
Willow, Silky	<i>Salix sericea</i>	3' Stake	70
Elderberry, Common	<i>Sambucus canadensis</i>	3' Stake	50
Viburnum, Arrowwood	<i>Viburnum recognitum</i>	3' Stake	50
<b>Total Live Stakes</b>			<b>400</b>
<b>Total Wetland Plants</b>			<b>475</b>

Wildlife Trees & Shrubs - Floodplain			
Landowner: Boyce Pond			Total Sq. Ft.
			<b>21,780</b>
<b>acres</b>			<b>0.5</b>
<b>25' x 25' Spacing Per Acre -</b>			50 <b>25</b>
Common name	Scientific name	Form	Number of Plants needed
Hazelnut, American	<i>Corylus americana</i>	1 G	5
Chokecherry	<i>Prunus virginiana</i>	1 G	5
Rose, Virginia	<i>Rosa virginiana</i>	1 G	5
Oak, Red	<i>Quercus rubra</i>	1 G	5
Oak, White	<i>Quercus alba</i>	1 G	5
<b>Total Floodplain Plants</b>			<b>25</b>

Flood tolerant  
Requires Moist Conditions  
Dry Tolerant after Establishment

New England Wetmix (Wetland Seed Mix)		
Common Name	Scientific Name	IND
Fox Sedge	<i>Carex vulpinoidea</i>	OBL
Lurid Sedge	<i>Carex lurida</i>	OBL
Blunt Broom Sedge	<i>Carex scoparia</i>	FACW
Blue Vervain	<i>Verbena hastata</i>	FACW
Green Bulrush	<i>Scirpus atrovirens</i>	OBL
Hop Sedge	<i>Carex lupulina</i>	OBL
Nodding Bur Marigold	<i>Bidens cernua</i>	OBL
Bristly/Cosmos Sedge	<i>Carex comosa</i>	OBL
Fringed Sedge	<i>Carex crinita</i>	OBL
Soft Rush	<i>Juncus effusus</i>	FACW+
Wool Grass	<i>Scirpus cyperinus</i>	FACW
American Manna grass	<i>Glyceria grandis</i>	OBL
Spotted Joe Pye Weed	<i>Eupatorium maculatum</i>	FACW
Boneset	<i>Eupatorium perfoliatum</i>	FACW
Mud Plantain	<i>Alisma subcordatum</i>	OBL
Purple Stemmed Aster	<i>Aster puniceus</i>	OBL
Rattlesnake Grass	<i>Glyceria canadensis</i>	OBL
Soft Stem Bulrush	<i>Scirpus validus</i>	OBL
Swamp Milkweed	<i>Asclepias incarnata</i>	OBL
Square Stemmed Monkey Flower	<i>Mimulus ringens</i>	OBL
<b>18 lbs / acre x 1 acre = 18 lbs seed mix</b>		

Temporary Seeding for Erosion Control & Stabilization 1.5acres		
Common Name	Scientific Name	Application Rate
Winter Rye	<i>Secale cereale</i>	90 lbs/ac x 1.5 ac = 180 lbs
Straw Mulch		2 ton/ac = 3 tons (150 bales)











